

KEEPING DEVICES AND USERS CONNECTED WITH MOBILE EYE

Mobile Eye empowers organizations to continuously monitor the wireless network from any Windows, Android, Linux or MacOS device. Know if the issue is wired, wireless or device related.

Wi-Fi performance tests are discretely run on laptops, tablets, scanners, pickers and other IoT at pre-defined intervals in the background and are unnoticed by the user. Digital experience results are uploaded to the cloud where trending data and comparison analytics can be accessed. With built-in-reports and automation, issues can be resolved before the user experiences are compromised.



Mobile Eye is equipped to handle wireless networks of any size and is completely AP agnostic. It can store 3 months of detailed historical performance data in the cloud so no need to worry about storage, backups or even feature updates.

Distributed organizations with large numbers of sites finally have an easy and economical way to get real-time visibility of the Wi-Fi user experience at any remote location. Instantly identify devices, buildings, floors, stores or campuses out of compliance with service level targets for Wi-Fi performance. Then take proactive and corrective action before anyone ever notices or complains.

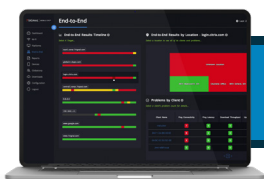


“ ONE OF OUR BUSINESS STRATEGIES IS ‘ALWAYS UP’. OUR CIO LIKES TO PREACH THIS. 7SIGNAL HAS HELPED US TO IDENTIFY COVERAGE GAPS AND ACHIEVE THIS OBJECTIVE. WE CAN ANTICIPATE COVERAGE GAPS, AND THIS MAKES OUR USERS MORE PRODUCTIVE. ”

FUTURE 500 TECHNOLOGY COMPANY

WHY MOBILE EYE





- 32% more efficient networking teams
- 3 months to payback on investment
- Client and AP agnostic
- System-wide WLAN visibility
- 43% reduction in network-related unplanned downtime
- Monitor Wi-Fi network performance in remote locations
- Export data to existing dashboards and applications to include wireless network details into current processes
- Collect 90-days of device connection history



Schedule a demo today!



MOBILE EYE CAPABILITY MATRIX

	 WINDOWS	 MAC	 ANDROID	 LINUX
SUPPORTED VERSIONS	7 and 10	Yosemite, El Capitan, Sierra, High Sierra, Mojave, Catalina, Big Sur	5 (Lollipop), 6 (Marshmallow), 7 (Nougat), 8 (Oreo)	x86 based platforms: IGEL OS 10 / 11 RHEL 7 / 8 CentOS 7 Ubuntu 20 and up Debian 10 and up
KEY PERFORMANCE INDICATORS/ NETWORK DATA	Throughput, Latency, Frequency, Channel, Signal strength, Data rate, SSID, BSSID	Throughput, Latency, Frequency, Channel, Signal strength, Data rate, SSID, BSSID	Throughput, Latency, Frequency, Channel, Signal strength, Data rate, SSID, BSSID	Throughput, Latency, Packet Loss, Jitter, MOS, Frequency, Channel, Signal strength, Data rate, SSID, BSSID
DEVICE DATA GATHERED	OS Version, Make, Model, WLAN Adapter, Driver version, Approx. location, MAC address, IP address, Client host name	OS Version, Make, Model, WLAN Adapter, Driver version, Approx. location, MAC address, IP address, Client host name	OS Version, Make, Model, Approx. location, Client host name	OS Version, Make, Model, WLAN Adapter, Driver version, Approx. location, MAC address, IP address, Client host name
DEPLOYMENT	MSI installer, GPO, SCCM or equivalent	PKG installer, Apple DEP, Casper, jamf or equivalent	Google Play or MDM software	IGEL Custom Partition, IGEL Ready Showcase

CUSTOMERS



“ THE DATA COMING OUT OF AN ACCESS POINT MAY NOT REFLECT WHAT THE USER’S EXPERIENCE IS. THIS IS WHERE 7SIGNAL COMES IN. ”

FUTURE 500 TECHNOLOGY COMPANY

